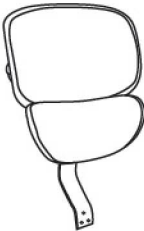
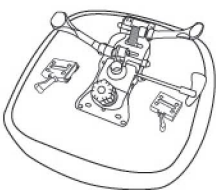


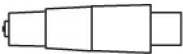




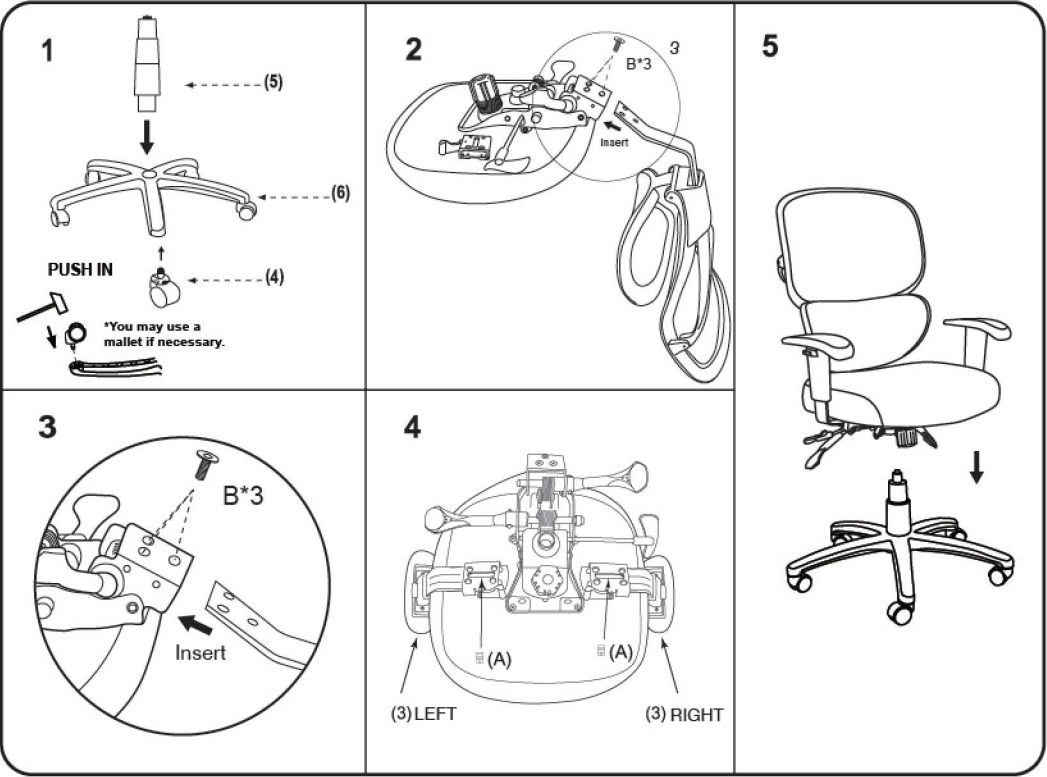


**IMPORTANT NOTICE:
HARDWARE PACKAGE IS ATTACHED
ON THE BOTTOM OF SEAT CUSHION.**

MODEL : B6338

(1)x1	(2)x1	(3)x1 (L)x1 (R)
		
Back Cushion	Seat Cushion W/Mechanism	Right & Left Arm
(4)x5	(5)x1	(6)x1
		
Casters	Gas Lift W/ Cover	Base
<div><div>(A)x2</div><div>(B)x3</div><div>(C)x1</div></div> <div>M10 ARM BRACKET SCREW (These screws are in the adjustable arm bracket attached to seat bottom)</div> <div>M8*22 L-BAR SCREW</div> <div>ALLEN KEY</div>		



**Insert and loosely tighten all screws. When assembly is completed, fully tighten all screws before using.
This chair is only intended for sitting. Any other use will void the warranty.**

